

NEW ZEALAND INTERNATIONAL SCIENCE FESTIVAL

28 June – 6 July 2025
Dunedin | Ōtepoti



FESTIVAL GUEST: DR MICHELLE THALLER



We're so proud to be welcoming Dr Michelle Thaller to Ōtepoti Dunedin to share her vast knowledge of space and the universe.

Dr Michelle Thaller recently retired from NASA after 27 years, ending as the Assistant Director of Science at NASA's largest base, Goddard Space Flight Center in Washington, DC. She has loved the stars since she could barely walk (according to her mother) but as a student, she felt pretty scared and lost in her science classes, until she discovered the curiosity, passion, kindness, and humour in her astronomy professors. She wanted to be around people like that.

While working at NASA's Jet Propulsion Laboratory, she became interested in how science was communicated to the public and decided to specialise in this for the rest of her career. Dr Thaller now has decades of experience sharing her own knowledge and that of others through science programmes such as *The Universe* on the History Channel, NatGeo's *The Known Universe*, Nova's *The Secret Life of Scientists*, several other BBC and PBS programmes, and the Big Think podcast.

She has presented two TEDx talks and been a featured speaker at San Diego's ComicCon, Hasbro Toy Company's innovation workshops, and climate summits in the US and Europe. She has received awards for online science content and is especially proud of NASA's social media programme.

Dr Thaller is currently a professor at the University of Wisconsin, Milwaukee and a part-time commercial fisherwoman working out of Petersburg, Alaska. While here in Ōtepoti, Dr Thaller will offer several events – don't miss out!

As an extension of her visit to the New Zealand International Science Festival, Dr Thaller will also be speaking at events in Auckland on June 11 & 12, and Wellington on June 18.

Visit scifest.org.nz or @nzscifest on Facebook for more about these events.



Our thanks to the US Embassy for their support to bring Dr Michelle Thaller to Ōtepoti with a NZ Public Diplomacy Grant.

NEW DISCOVERIES, NEW CONNECTIONS

SAT 28 JUNE • 6PM • 60MIN • BOOKING REQUIRED
TEACHERS COLLEGE AUDITORIUM • FREE



Do you think of astronomy as the study of far-away objects with no real meaning in your daily life? Dr Michelle Thaller, will explain why that idea couldn't be further from the truth. With new observations from our telescopes and planetary spacecraft, we are uncovering the story of ourselves.

Find out how the universe is coursing through your veins, how it wound up in your DNA, and why your next breath is literally as vast as a galaxy.

ASK ME ANYTHING! (ABOUT SPACE...)

SUN 29 JUNE • 10.30AM • 60MIN • BOOKING REQUIRED
TEACHERS COLLEGE AUDITORIUM • FREE



Dr Thaller loves talking about space! Bring your inquisitive minds, old and young, and ask her anything.

She'll start with her favourite facts about the universe, stories of space exploration, and the search for life on other planets. After that, it's up to you! Bring all your burning questions for one of the world's best space science communicators to answer.

CAREERS IN SPACE: WOMEN SHAPING AOTEAROA'S FUTURE IN STEM

TUE 1 JULY • SEE PAGE 25 FOR DETAILS

WELCOME

Tēnā koutou

Welcome to Ōtepoti Dunedin, the proud host city of the New Zealand International Science Festival.

Dunedin is a city of science thanks to our exceptional education and innovation sectors, and this makes us the perfect place for this fantastic festival.

This year's programme is equal parts fun and fascinating, and features more than 100 unique workshops, talks, panels and activities for all ages and interests – as well as a lively Festival Hub, located on the top floor of the Meridian Mall.

Among the many highlights will be hearing the insights and experiences of this year's special festival guest Dr Michelle Thaller, the former deputy director of Science Communication at NASA.

Science influences almost all aspects of our everyday lives – from food, energy, climate, medicine, transport and beyond – and has the potential to improve the world around us at every level.

So, confer with your friends and whānau and make plans to sample the spectacular science smorgasbord on offer.

I hope to see you there!

Kā mihi nui,



Jules Radich
Mayor of Dunedin



Tēnā koutou katoa

This July, Ōtepoti Dunedin becomes a city truly alive with curiosity. It is our absolute pleasure and privilege to welcome you to the 2025 Festival – our biggest and most vibrant yet. From 28th June to 6th July, we invite you to explore more than 100 unique events designed to spark wonder, ignite conversation, and celebrate the many ways science connects us. From workshops and walking tours to panels, performances, and pop-up encounters, this year's programme offers something for every age and every kind of mind.

We are honoured to host Dr Michelle Thaller, former Deputy Director of Science Communication at NASA, as a special guest. Her ability to weave cosmic science with human storytelling promises to be a true festival highlight. Another exciting highlight, will be **our largest ever Festival Hub**, located on the top floor of the Meridian Mall in the former Smith City/Kmart space. It will be a central space of hands-on experimentation, inspiration, and community connection. Come by, stay a while, and see where your curiosity takes you.

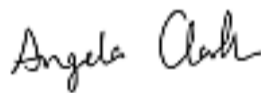
We're especially proud that over 70% of our NZISF-organised events will include elements of mātauranga Māori, thoughtfully woven throughout the programme. This reflects our commitment to honouring Indigenous knowledge as fundamental to how we understand science, place, and connection in Aotearoa. From Dr Ihirangi Heke's talk and bushwalk exploring Atua Matua, to Jess Nicholson's aurora-inspired art workshops, and the Ruruku exhibition celebrating waka traditions – these events will offer opportunities to learn through story, whakapapa, and relationship with the land. We're deeply grateful to all those who will share their knowledge with us.

A festival of this scale would not be possible without our incredible **funders, sponsors, partners, and volunteers**. Your support, dedication, and belief in our kaupapa help us bring science to our city. Notable thanks go to the Otago Community Trust, the Dunedin City Council, New Zealand Major Events and the University of Otago; without their support the festival as it is today would not be possible.

With the **Midwinter Carnival, the All Blacks vs France test match**, and the school holidays all aligning with our festival dates – this might just be the most dynamic and joy-filled winter Dunedin has ever seen.

Whether you're coming for inspiration, connection, entertainment or fun – *nau mai, haere mai*. I hope this Festival brings you moments of wonder and lifelong memories.

Kā mihi nui,



Dr Angela Clark, President
New Zealand International
Science Festival



Jerome Cousins, Director
New Zealand International
Science Festival



PARTNERS

MAJOR PARTNERS



SUPPORTING ORGANISATIONS & FUNDERS



DIRECTOR'S TOP 10



DR MICHELLE THALLER KEYNOTE | PG 2



RURUKU EXHIBITION | PG 24



ATUA MATUA | PG 25



LIFE AFTER COVID | PG 27



RACHEL RAYNER QUANTUM COMEDIES | PG 12-13



UNIVERSITY OF OTAGO SCIENCE EXPO | PG 17



BUILD BEAM BRISTLEBOTS | PG 20



HUNT FOR THE AURORA | PG 18



THE WIZARD'S APPRENTICE | PG 18



THE FUTURE OF GENE TECHNOLOGY | PG 25

HOW TO USE THIS GUIDE

AGE RECOMMENDATION

- ALL AGES
- PRESCHOOL (0-4)
- KIDS (5-8)
- TWEENS (9-12)
- TEENS (13-17)
- ADULTS
- R18 R18 RESTRICTED

PRICE LISTING (WHERE APPLICABLE)

FULL PRICE/CONCESSION
PWYW = PAY WHAT YOU WANT

BOOKING REQUIRED





FESTIVAL HUB

TUESDAY 1 JULY TO SUNDAY 6 JULY • 10AM – 3PM • MERIDIAN MALL

Drop by NZISF25's Festival Hub every day for a rotating selection of free, hands-on science fun for the whole whānau – plus amazing workshops and fascinating talks!

There will be gaming, computing and technology, kōura, frogs and kiwi, digital art, volcanic exploration, a repair station, hands-on science, a magical mystery, story time, giveaways and much more. Meet some of our local science and conservation organisations and get a feel for what they do.

And of course, our ever popular, super fun Imagination Playground will be ready for your little ones to play and create. Whatever you're into, there will be something to enjoy.

What's new at the Festival Hub in 2025

We have an exciting line up of speakers for our new Festival Hub seminar series – pop into the Hub seminar space for free daily talks. See full details on page 11.

If you're keen to find something extra to take home or looking for a gift for a science-minded person, visit our first science shop at the Hub! Come check out our great range of science activities and merch! A collaboration with our friends at Science Alive.

The Festival Hub is in the former Smith's City/Kmart space upstairs at the Meridian Mall. For a full list of daily activities, check out scifest.org.nz.



SCIENCE STORYTIME WITH UBS ●

TUE 1 TO FRI 4 JULY • 9.30AM • 30MIN • FREE

The University Book Shop is excited to be bringing their magical Story Time sessions back to the Festival. Come along at 9.30am to hear their wonderful Story Teller share stories and finish off the session by indulging your creativity in some crafty fun!



SCIENCE ALIVE: HANDS ON SCIENCE! ●

TUE 1 TO SUN 6 JULY • DROP IN • FREE

Come and see Science Alive and get hands-on with interactive science fun. Explore the magic of light and colour, and test your skills with our electrifying buzz wire challenge. Fun for all ages!



IMAGINATION PLAYGROUND ●●●

TUE 1 TO SUN 6 JULY • DROP IN • FREE

Kids build a new world every day with the *Imagination Playground* engineering blocks. They make animals, rocket ships, and robots. They make imaginary places like houses, factories, and cities. They make new dramatic scenarios, settings, and games to play. Most importantly, they make the rules.

Because *Imagination Playground* is child-directed and open-ended, it encourages self-expression through deep, joyful play. Come and enjoy this creative, engineering adventure.



CONNECTING AND TAKING ACTION TOGETHER ●

TUE 1, THU 3 JULY • DROP IN • FREE

Help EnviroSchools make a map, both physical and online, to showcase all the local projects, people and groups, and share your ideas for creating a peaceful and sustainable future for all.

EnviroSchools is all about creating a healthy peaceful world through learning and taking action together. Making connections and creating Sustainable Communities are a great place to start this mahi.



VOLCANO EXPLORERS: AOTEAROA NEW ZEALAND ●●●

TUE 1 TO FRI 4 JULY • DROP IN • FREE

Have a day as a volcano explorer! Play *5 Minute Volcano*, a fast-paced card game where team players work together to overcome challenges from different New Zealand volcanoes, ranging from Whakaari White Island to Taupō itself.

More into digital games? Play mini games where you can face an evacuation challenge or build your own volcano.

Not into games at all? Try drawing or colouring your own volcano together! Come for a blast of fun!



ALTERNATIVE OPERATING SYSTEM DEMONSTRATION ●●●

TUE 1 TO SUN 6 JULY • 10AM – 12PM • DROP IN • FREE

Check out the collection of old-school computers running alternative operating systems, extending their useful lifespan.

Come October, your Windows 10 device will be unsupported and therefore unsecured. Can you afford to replace it? If not, take this opportunity to try out some alternative operating systems that could lengthen the life of your Windows 10 laptop or computer.



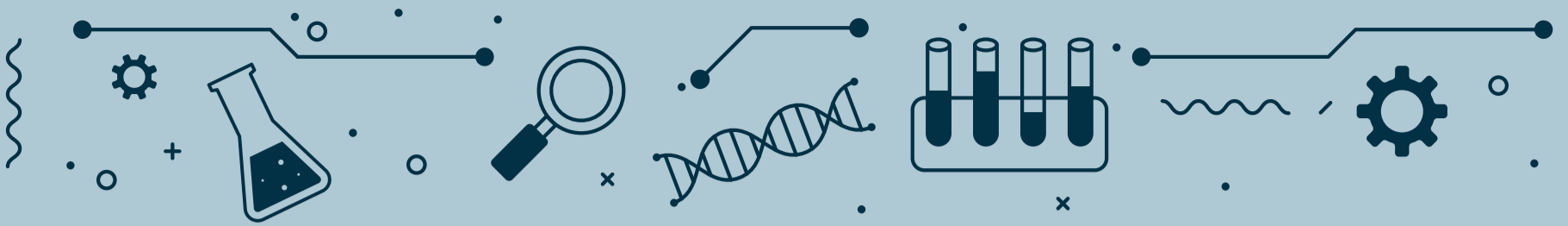
ROBOTICS. AUTOMATION. INNOVATION. ●

TUE 1 TO SUN 6 JULY • DROP IN • FREE

Learn how Scott's uses technology, robotics and AI to design and build solutions for complex problems. Scott Technology is a global engineering company that builds high-tech solutions used in industries around the world – from advanced robotics and vision to fully automated production lines.

Scott Technology's stall will show how their engineers and scientists bring these hi-tech solutions to life and see a working robot in action doing some fun, interactive activities.

Become inspired by real-world innovation happening right here in Dunedin.



BACKYARD BIODIVERSITY ●

TUE 1 TO SUN 6 JULY • DROP IN • FREE

Backyards can be refuges for wildlife, dens for children, sources of food and nourishment, and spaces of speculation on what might have gone on before and what may be occurring out of sight. Backyards can tie us to the rhythms of nature, give us space to relax and enjoy with others. Caring for our backyards can give us a sense of achievement, inspire us and heal us.

Visit this visual and interactive exhibit for all ages to learn about plants, animals and inspiring stories. See the online programme for a full list of our activities.



SUSTAINABLE KEYBOARD ARTPLAY ●●●

TUE 1 TO SUN 6 JULY • 10AM, 11AM • 60MIN • FREE

Come and help to repurpose e-waste keyboards! Get on the screwdrivers and find the hidden parts that make a keyboard work and then make some art using the keys from the keyboards.



INTRIGUING KŌURA ●

TUE 1, WED 2 JULY • DROP IN • FREE

Have you ever been to a river or lake at night and seen a kōura scuttling around? These critters are important for the health of our rivers and lakes, and they taste delicious too! But kōura are in trouble.

Why are their numbers plummeting? Come and learn from members of the Fish Futures research programme about how you can help protect kōura from threats such as habitat loss and invasive catfish. You'll discover how to catch and measure kōura, and how to keep our lakes and rivers healthy.

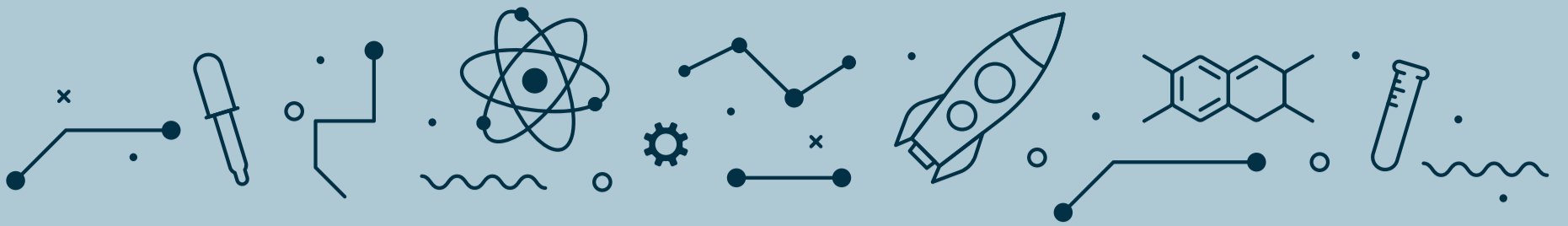


SCIENCE IN THE TOWN BELT ●

WED 2 JULY • DROP IN • FREE

Threaded through Dunedin's city centre, the Dunedin Town Belt is a precious green haven for nature and people. It is also an amazing outdoor classroom resource within one kilometre of about 30 Dunedin schools and early childhood centres.

The student leaders of Town Belt Kaitiaki invite you to visit their student-led stall to learn some cool science facts about the Town Belt. Try your hand at some interactive science-focused activities and games (some that they've created) and meet members of the friendly team. They are excited to share what they have learned this year with you!



THE WRATH OF QUENCH!

WED 2 JULY • 10AM, 12PM, 2PM • 60MIN • FREE

Those curious rakatahi, Tama and Kotiro, are diving back into the Quantum World in this next volume of Quantum Haerenga by Māui Studios and Te Whai Ao Dodd-Walls Centre.

Help launch the next volume, *The Wrath of Quench*, at the Festival Hub! Get up close and personal with superconductors with Te Whai Ao Dodd-Walls Centre or sign up for a workshop to hone your graphic design skills with the artists from Māui Studios – don't miss out!



TE TAHU-NUI-A-RANGI (AURORA) CLAY TILE MAKING

WED 2 JULY • 10.30AM, 1.30PM • 90MIN • \$30

Make your own clay tile art inspired by the aurora/Te Tahu-nui-a-rangi. Join local artist Jess Nicholson (Kāi Tahu) to learn some of the science and pūrākau about aurora and then use this knowledge to create aurora-inspired art. You'll decorate a clay tile which will be fired by Jess for you to collect from the Science Festival office after the Festival. All materials provided.



DR ROCK

WED 2 TO SUN 6 JULY • 10AM – 12PM • DROP IN • FREE

Dr Rock's amazing rocks! Not all rocks are grey, hard and boring.

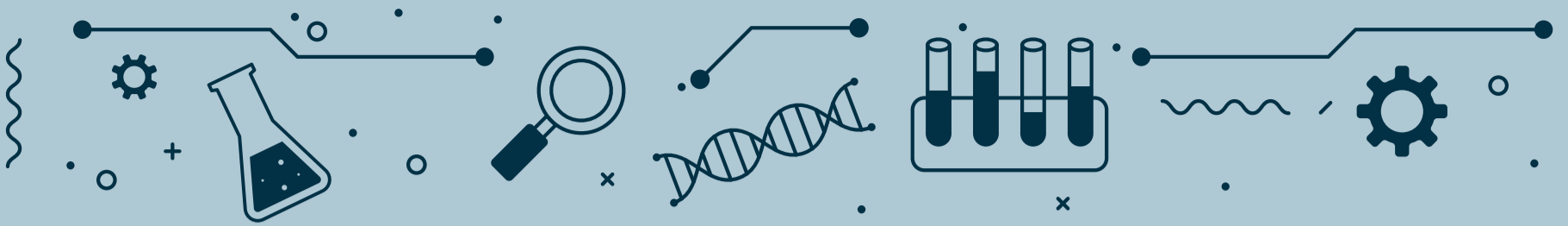
Come and see all of Dr Rock's light, dense, flaky, tough, coloured, glittery, fizzy and magnetic rocks and minerals. And all rocks tell a story: bring your favourite rocks, minerals or fossils from home for Dr Rock to identify and talk about.



HANDS-ON RENEWABLE ENERGY WORKSHOP

THU 3, FRI 4 JULY • 10AM • 2HRS • FREE

In this workshop, experts from the MacDiarmid Institute of Advanced Materials and Nanotechnology will help you learn more about these exciting pieces of technology. First, you will have the chance to make a small solar panel using blueberries and photovoltaic materials. Second, you will split water to produce hydrogen gas, and put it to work with a (miniature) hydrogen-powered car!



WHO KILLED THE KIWI?

THU 3, FRI 4 JULY • DROP IN • FREE

A Rakiura Tokoeka/Southern Brown Kiwi has been found dead on Rakiura/Stewart Island. Can you use genetic and forensic evidence to work out which creature is the culprit? Load a DNA gel, study animal hairs down a microscope and figure out the footprints to come up with your conclusion!



LIVING ALONGSIDE PAKAKE

THU 3, FRI 4 JULY • 12PM • 3HRS • FREE

Have you encountered Pakake/New Zealand sea lions?

Join a participatory science workshop to investigate current research about their interactions with the public, look into the diet and range of locally born pakake, and determine what actions are needed to better co-exist in the future.

These sessions are part of the research done through the Department of Marine Science, the Marine Megafauna Research Group, and Coastal People: Southern Skies.



YOUTH COMPUTER HARDWARE WORKSHOP

THU 3, FRI 4 JULY, 1PM • 90MIN
SAT 5 JULY, 10AM & 1PM • 90MIN • FREE

Join our computer deconstruction workshop. Strip it, rebuild it, plug it in and make it go. Sign up to get a free working computer plus peripherals (monitor, keyboard, mouse and cables)!



TAKE BACK YOUR GARDEN

FRI 4, SAT 5 JULY • DROP IN • FREE

Learn to recognise and control pest plants to help protect Otago's environment.

This exciting event focused on identifying and controlling invasive pest plants in your garden and the Otago landscape! Experts from the Otago Regional Council and Dunedin City Council will help you identify some common pest plants, share practical tips for control, and explain the importance of replacing them with native plants. There may even be a free native plant for you to take home too!



HEART HUB

FRI 4 JULY • DROP IN • FREE

Heart researchers have joined forces and are taking over the Festival Hub! The Heart Hub crew has an epic array of activities to drop in and enjoy.



HANDS-ON RENEWABLE ENERGY

SAT 5, SUN 6 JULY • 11AM – 2PM • DROP IN • FREE



What if a boat could have sails made of solar panels? What if we can use wind and water to produce hydrogen gas? What if your car could be powered by that hydrogen? Explore these questions (and others) with fun, interactive hands-on demonstrations.

Meet members of the MacDiarmid Institute for Advanced Materials and Nanotechnology to learn about work being done right here in Aotearoa New Zealand, and discover how nanotechnology and materials science can lead the way to a brighter, greener, zero carbon future!



QUANTUM QUEST



SAT 5, SUN 6 JULY • DROP IN • FREE

Do all things quantum physics leave you puzzled? Or have you already mastered qubit control? Either way – or especially if both are true! – come have some fun at the Festival Hub with this all-day gaming pop-up where the rules of quantum mechanics apply!

Concepts like entanglement, superposition, and uncertainty put a fun new spin on some classic games, like TicTaqToe and Quantum Chess, while brand new games like Psi and Delta and QCards have been created for players to interact with these concepts in virtual worlds. Suitable for most ages.



PEPEKETUA OF AOTEAROA

SAT 5 JULY • DROP IN • FREE

NZFrogs is a charitable trust helping people learn about and engage with the conservation of New Zealand's native frogs. NZFrogs has developed a series of educational booklets and posters showcasing native frogs and their conservation!

The series, entitled *Pepeketua of Aotearoa*, is attractively illustrated to appeal to all ages, but also provides a complete introduction for interested readers. At this event, NZFrogs will showcase the *Pepeketua of Aotearoa* series in English and Te Reo Māori alongside a number of fun craft activities.

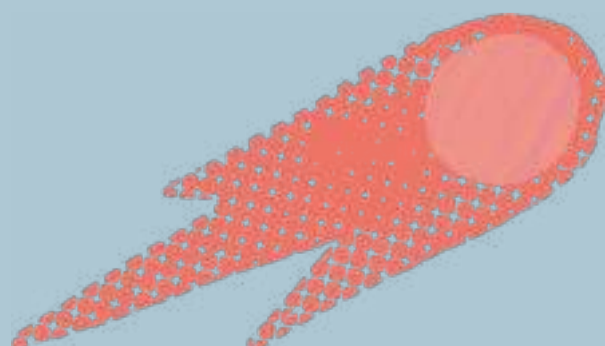


DUNEDIN REPAIR CAFE

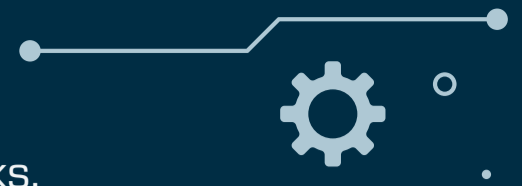


SUN 6 JULY • DROP IN • FREE

Pull out the broken things you have stashed in the back of the cupboard and the clothes in the back of the closet that need stitched up. Our volunteer electricians, sewing experts and digital/IT technicians will have a go at fixing them for you.



FESTIVAL HUB SEMINARS



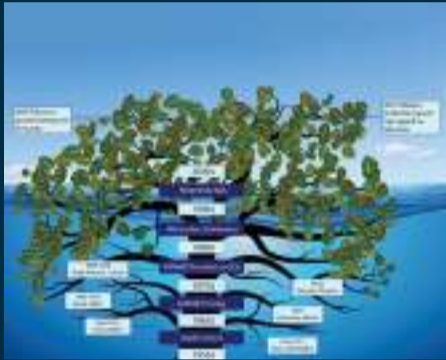
Pop into the Festival Hub seminar space for these free daily talks.



LET'S TALK CITSCI MINI-TALK ●

TUE 1 TO THU 3 JULY • 12PM • 60MIN • FREE

Did you think science was just for scientists? NOPE – science is for everyone! Pop into this mini talk to learn about ground-breaking local, regional, national, and global research that you can be a part of in fun and creative ways. Citizen Science supercharges science with the power of the public – it's all about educating and empowering our people in science!



MAKING INTERNET HISTORY MORE VISIBLE ●●

TUE 1 JULY, 2PM • WED 1 JULY, 11AM • 60MIN • FREE

Noel Packard will narrate how she developed infographics to chart the socio-economic, legislative and political history of the military networks transformed into the privatised Internet. She collaborated with New Zealand and US graphic designers to design infographics that illustrate the phased testing, distribution and commercialisation history of pre-Internet, military networks.



SEASONS IN THE SEA SEMINAR ●●

THU 3 JULY • 2PM • 60MIN • FREE

Join Rob Lewis as he explains the latest findings of the *Seasons in the Sea* project. This participatory science initiative launched in 2023 explores the seasonal cycles of plankton in the Otago Harbour. Data from the latest local plankton samples (collected in our NZISF practical event on Tuesday 1 July!) will contribute to this project.



GETTING THE MEASURE OF ALCOHOL ●●

FRI 4 JULY • 2PM • 60MIN • FREE

Where does alcohol come from? What is it and why and how do we measure it? This whirlwind tour begins in pre-history and ends here in Dunedin today. Along the way, we visit cultures from around the world, meet some colourful characters and introduce the rationale for, and the science behind, alcohol measurement.



FOSSILS TALK HISTORICAL PLASTIC ●

SAT 5, SUN 6 JULY • 2PM • 60MIN • FREE

During the COVID lockdown, Dunedin artist Janet de Wagt began cataloguing her huge historical plastic collection. She has used miniature plastic figurines that she calls the Fossil Family (after the tin they are kept in), to explore and delve into the social and design history of individual items from the collection.



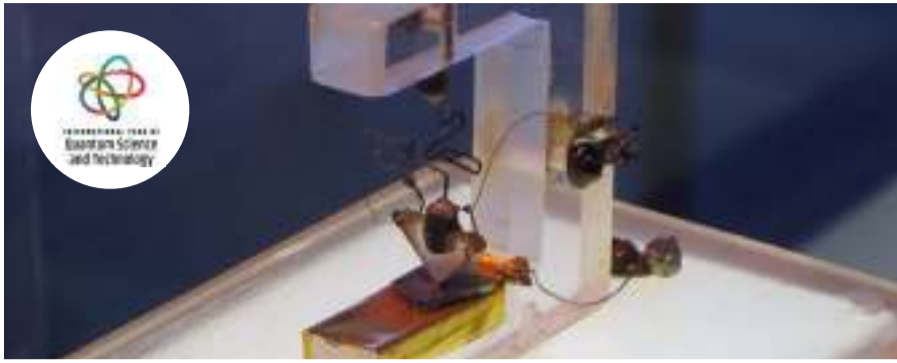
JEAN STEVENS AND *BLOOMING IMPOSSIBLE* ●●

SUN 6 JULY • 11AM • 60MIN • FREE

Jean Stevens (1900-1967) developed the first yellow and pink amoena irises 'Pinnacle' and 'Sunset Snows', and was instrumental in developing the outstanding red Leucadedron 'Safari Sunset'.

Award-winning author Karen Wrigglesworth has been intrigued by Jean's story since she was a girl and is currently writing Jean's biography, *Blooming Impossible*.

SHOWS



WHAT IS QUANTUM TECHNOLOGY?

SAT 29 JUNE • 2PM • 60MIN
UNIVERSITY OF OTAGO - TEACHERS COLLEGE AUDITORIUM • FREE

This one-hour, interactive demonstration lecture will showcase how fundamentals of quantum physics led to the first quantum revolution – the digital age based on electronics and the communication age based on photonics/optical fibre communications.

Hear about the second quantum revolution, quantum computing and cryptography, highlighting what is (and is not) promised in this new quantum age. The lecture will be mostly demonstrations and interactives, with some big bangs, laser light, superconductors and levitation!



THE RETURN OF QUANTUM SHORTS

MON 30 JUNE • 5.30PM • 60MIN
TŪHURA OTAGO MUSEUM - PLANETARIUM • FREE

In honor of the International Year of Quantum Science and Technology 2025, catch the weird, wonderful, and stranger-than-fiction side of science on the big screen!

This screening will feature past winners of the international *Quantum Shorts* competition, where the films are less than five minutes long and use live action, stop-motion, puppets, and everything in between to tell a quantum-inspired story.

Grab some popcorn, get comfy, and enjoy the show in Tūhura Otago Museum's full-dome planetarium.



IMPROV: ENTANGLED

FRI 4 JULY • 6PM • 60MIN • NEW ATHENAEUM THEATRE • \$15 | \$20

Join Improsaurus, Ōtepoti's BEST (and only) improvisational theatre troupe for a performance inspired by everyone's favourite topic – Quantum Mechanics!

In the space of an hour, we will create a show on the spot with only audience suggestions and the world of quantum physics to guide us. Come and watch as science and theatre become ENTANGLED...

PS Hate audience participation? No worries, it's always voluntary.

Improsaurus will also be presenting the workshop, *Forces At Play*, for the festival. Workshop attendees will get discounted tickets to *Entangled*.



A FLYING PHOTON

TUE 1, WED 2 JULY • 7.30PM • 60MIN • TE WHARE O RUKUTIA • \$15 | \$20

Through humour, sequins and sparkles, uncover a bizarre piece of quantum mechanics which brings us both a sunset and the internet with Rachel Rayner, Science Explainer. Science show meets fringe show in this amalgamated mess of comedy and quantum. There will be experiments, poetry, wine, and a deep dive into some of the best features in the cosmos, including our wonderfully radiating selves.

This is science that will leave you starry-eyed and celebrating colours of light you have never seen before. Just be ready for all the puns. This is enlightening light entertainment, after all.



ATOMICALLY CORRECT

FRI 4 | 7.30PM, SAT 5 JULY | 3PM • 60MIN • TE WHARE O RUKUTIA • \$15 |

Unravel the mysteries from inside the atom in this quirky comedy by Rachel Rayner, Science Explainer. Solidly funny, with a splash of sequins and an air of wonder, this strange yet charming adventure is full of ups and downs while breaking open the truth and beauty of the atom.

Delving into language, lies, and quantum-level realities, this science comedy for adults gives us space to chuckle at the Universe and contemplate how, while we're mostly nothing, we still matter.

Whatever your state, it'll be a quarking good time.



AN INTROVERT'S GUIDE TO EXTROVERTS

WED 2, THU 3 JULY • 7.30PM • 60MIN • BARNETT LECTURE THEATRE
FRI 4 JULY • 9PM • 60MIN • TE WHARE O RUKUTIA • \$15 | \$20

Straight from the Melbourne International Comedy Festival, this comedy 'lecture' explores the history of introverts in society, their current status and potential future.

The role of introverts in society has been diminishing in recent years with their historical positions increasingly taken by those with extrovert tendencies. How can introverts survive and what do they need to do to adapt?

Update: tutor Matt Boring (Luke Morris) will be taking this lecture and there are to be no questions about Dr. Lachmann's escaped lab monkeys. It's all totally fine. Do not worry.



AUSTRALIAN HIGHLIGHTS LIVE NZ EDITION

THU 3 JULY • 7.30PM • 60MIN • TE WHARE O RUKUTIA • FREE

This series looks for the innovative people and ideas which are not – yet! – common knowledge. In an antipodean twist, we're investigating a New Zealand innovation that Australia attempts to claim...

Join comedian, subject matter expert and host Rachel Rayner, Science Explainer, for this live recording especially for the New Zealand International Science Festival. We'll be exploring the science, art and culture of this local (or Australian?) innovation to finally replace myth with fact.



MEET MARIA SKŁODOWSKA-CURIE!

WED 2 TO SUN 6 JULY • 10.30AM • 15MIN • FESTIVAL HUB • FREE

The Maria Skłodowska-Curie Museum team made a movie to introduce the greatest Polish scientist – Maria Skłodowska-Curie.

The movie is based in Maria's hometown of Warsaw, at the only biographical museum of the scientist, located at her birthplace. The film talks about Maria's life and discoveries, shows the main exhibition and the most important and interesting exhibits and shows her ties with Rutherford, a New Zealand physicist whose scientific interests focused on similar areas to Maria's.

TOURS



INTO THE GREEN: NATURE FOR WELLBEING 🍷 ●

SAT 28 JUNE, 1PM | TUE 1 JULY, 2PM | THU 3 JULY, 10AM | FRI 4 JULY, 12PM
SUN 6 JULY, 11AM • 90MIN | WOODHAUGH GARDENS • PWYW

Join passionate nature nerd Jenny Chandler for a gentle guided walk that will leave you feeling inspired, refreshed and relaxed.

Learn about some of the fascinating research into the power of nature for health and wellbeing and discover simple invitations that can help you slow down, connect and bring this wisdom into your daily life.

Perfect for nature lovers, wellbeing seekers, and the science-curious alike. Dress warmly and bring a curious mind.



EXPLORING THE DUNEDIN NIGHT SKY AND ALL ITS WONDERS ● 🍷

SAT 28 TO MON 30 JUNE, FRI 4 TO SUN 6 JULY • 7PM • 90MIN
BEVERLY-BEGG OBSERVATORY • \$10

Get to know the southern night sky in this fun, safe, and educational night out. Book in to see the Beverly-Begg Observatory's scientific work up close.

Outside, there will be guided laser pointer star tours and telescopes pointed at some of the most interesting spots in our southern sky.



MARINE ENCOUNTERS 🍷 ●

SUN 29 JUNE • 10AM, 12PM • 90MIN
UNIVERSITY OF OTAGO - NZ MARINE STUDIES CENTRE • \$10 | \$20

During a tour of the NZ Marine Studies Centre at Portobello, connect with your coast, meet local marine species in our touch tanks, and discover what makes them special. Tour the Portobello Marine Lab's research and teaching facilities and glimpse what it is like to study Marine Science at the University of Otago.





SCIENCE AT THE OPERA

SUN 29 JUNE, SUN 6 JULY • 3PM • 60MIN • THE OPERA • \$55

The OPERA science tour offers an immersive look into our eco-reserve's unique ecosystem and conservation efforts. Participants will explore the reserve, learn about scientific research, and take part in a 5-minute bird count, recording all birds seen or heard.

Whether you're an eco-enthusiast or a budding scientist, this tour highlights the importance of ecological restoration – an educational experience that showcases the power of science and community in conservation.



SCOTT TECHNOLOGY WORKSHOP TOUR

MON 30 JUNE • 3.30PM • 60MIN • SCOTT TECHNOLOGY • FREE

Scott Technology is a leading engineering company at the forefront of automation and robotics. The tour behind the scenes at the Dunedin factory will show how robotics, technology, and precision manufacturing are combined to produce world leading automation and technology solutions.

The tour offers the opportunity to see how Scott's engineers, scientists and tradespeople bring innovation to life, combining mechanics, vision, robotics, and software to build machines used in industries around the world.



SIP & SCIENCE - EMERSON'S BREWERY TOUR

TUE 1 TO SUN 6 JULY • CHECK WEBSITE FOR TIMES • 60MIN
EMERSON'S BREWERY • \$40

Take a tour through Emerson's Brewery looking at the science of brewing and fermentation. Gain insight into the important role enzymes play in the brewing process, take a look at fermenting yeast under a microscope, learn what makes nitrogenated beers so creamy, and take a hands-on deep dive into the world of beer sensory science with a guided tasting.



VISIT INNOVATION!

WED 2 JULY • 10AM, 11AM, 2PM, 3PM • 60MIN
FISHER & PAYKEL DESIGN CENTRE • FREE

Discover Fisher & Paykel's innovations up close. Learn about acoustics in the Sound Room and test your noise detection skills. Take part in Cooking Lab demos where experts reveal the science behind everyday cooking. Observe powerful spray arms and participate in wash tests.

Don't miss this unique opportunity to explore the science and technology behind Fisher & Paykel products.

Children under 14 must be accompanied by an adult.

TOURS



MAGICAL MOLECULE TOUR ●

WED 2 JULY • 1.30PM – 4.30PM • DROP IN
UNIVERSITY OF OTAGO - BIOCHEMISTRY DEPARTMENT • FREE

Make new bonds and learn more about the molecular magic that makes life work by visiting the Department of Biochemistry at the University of Otago Ōtākou Whakaihu Waka.

Talk to real scientists about their fascinating research. Explore the specialised equipment that allows us to probe the mysteries of the molecular world from confocal microscopes to chromatography and X-ray crystallography.

A free afternoon of displays, activities and laboratory tours that will give every young (and old) budding scientist the chance to learn more about the world of biochemistry.



HILLSIDE WORKSHOPS TOUR ●●●

WED 2 JULY • 9AM, 1.30PM • 60MIN • HILLSIDE WORKSHOPS • FREE

Come and take a glimpse at what goes on at the newly redeveloped KiwiRail Hillside workshops. Ever wondered how we build real trains and wagons? Join this rare opportunity to see the inner workings of the workshop in person!

Please note that a dress code is required for health & safety - see web listing for details.



BUSHWALK WITH IHIRANGI HEKE

SAT 5 JULY • 11AM • 60MIN
DUNEDIN BOTANIC GARDENS (LOVELOCK AVENUE) • FREE



Guided by what the environment offers on the day, this walk is a chance to connect with nature while hearing Dr Heke share his deep knowledge of Aotearoa's native environment and mātauranga Māori.



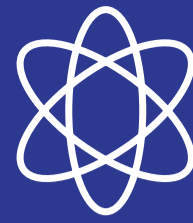
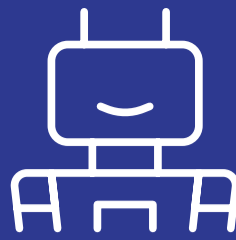
EXPLORING DUNEDIN'S EXTINCT VOLCANO ●●●●●

SUN 6 JULY • 10AM, 11.30AM • 60MIN • PORT TO PORT CRUISES • \$58

A special cruise for the school holidays! Explore the history and sights of Dunedin's extinct volcano by boat! Receive an explosive commentary from the skipper and a volcano expert as we go!

A science educator and geologist will be onboard to help identify the different layers of lava you will see and the dykes of rock where lava had tried to flow and then got frozen in time. We'll also have a chance to make a volcano onboard the boat to explode!





UNIVERSITY OF OTAGO SCIENCE EXPO

Meet our researchers and become a scientist for a day!

Ever wondered what scientists do all day? Come along and chat to Otago's real-world science researchers. Plus, roll up your sleeves and become a scientist in our interactive drop-in space. Perfect for curious minds of all ages.

Digging up the dead: Try out the techniques and tools used by scientists to dig for bones in our mock excavation – and learn how forensic science can uncover their stories.
Department of Anatomy | Te Tari Kikokiko

Time travellers: Delve into human history through ancient objects and discover what the past reveals about the future. Explore how our ancestors changed through time – our bodies, food, tools and objects.
Department of Archaeology | Mātai Whaipara Takata

DNA discovery: Learn about the molecules that make life work – DNA, proteins, and more. Pipette like a pro, vibrate with a vortex, and extract DNA out of a banana!
Department of Biochemistry | Te Tari Matū Koiora and Genetics | Mātai Ira

Plant secrets revealed: Explore a diverse range of plant life, from microscopic algae to mountain ecosystems. Get hands-on with real lab equipment that botanists use to unlock nature's secrets – from sea to summit.
Department of Botany | Te Tari Huaota

Better brains challenge: Learn how to build a healthy brain. Test your brain with fun challenges, get "positively wired" with interactive games, and walk through our giant inflatable brain!
BrainSTEM Otago

Our climate future: Meet climate researchers from He Kaupapa Hononga – Otago's Climate Change Research Network – and learn about environmental change and reporting. Map how climate change is impacting Aotearoa New Zealand, and take part in hands-on experiments about our changing world.
He Kaupapa Hononga – Otago's Climate Change Research Network.

Technology zone: Experience cutting-edge technology up close. Test out virtual reality worlds, play with mixed reality tools, and discover how AI is transforming our future through hands-on demos.
School of Computing | Te Kura Rorohiko

Smile science: Explore the fascinating world of teeth. Get hands-on with dental tools and discover the art and science behind healthy smiles.
Faculty of Dentistry | Te Kaupeka Pūniho

Our changing world: Explore Earth's amazing evolution through interactive activities. Discover how Geography helps us understand our planet and our changing world.
School of Geography | Te Iho Whenua

Glow gallery: Discover hidden colours invisible to the naked eye, and watch ordinary objects transform into glowing wonders under special UV lights in our dark room adventure.
Department of Geology | Te Tari Tātai Arowhenua

Food for thought: Become a sugar detective in our food investigation. Uncover hidden sweeteners in everyday foods, test your knowledge with hands-on experiments, and discover how diet shapes our health. Get ready for smarter food choices!
Department of Human Nutrition | Te Tari Kai Tōtika Tangata

Coastal connections: Dive into marine wonders with the Aquavan team. Meet live coastal creatures, explore our unique ocean, and discover how you can protect our amazing underwater world.
Department of Marine Science | Te Tari Pūtaiao Taimoana

Mind-bending fun: Warp your point of view by travelling near the speed of light. Fall into a fractal, contemplate some curly probabilities, and try some tricky puzzles in our chill-out zone.
Department of Mathematics & Statistics | Te Tari Pāngarau me te Tatauranga

Physics discovery: Chill out with liquid nitrogen, understand superconductors, and marvel at lasers. Discover how physics opens doors to incredible future careers!
Department of Physics | Te Tari Hu-O-Te Kohau

Nicotine-free futures: Clear the air with an interactive exploration of nicotine. Trace its global journey, uncover industry marketing tactics, reveal its footprint of harm, and explore ways to create healthier futures.
Department of Preventive and Social Medicine | Te Tari Hauora Tūmatanui

Understanding our brain and behaviour: Learn how your brain and different environments control your behaviour. Enjoy our psychology-related activities for all ages and chat to our team.
Department of Psychology | Te Tari Whakamātau Hinengaro

Measuring and mapping worlds: Discover the world of high-tech mapping and measurement. Build live landscapes in sand and experiment with virtual water flowing over your design. Robotically measure our 3D environments, and explore our changing world through maps and virtual reality using surveying and geospatial science.
School of Surveying | Te Kura Kairūri

Power pioneers: Witness green energy in action and discover how clever machines harness wind, sun and motion to power a sustainable future.
Sustainable Energy, Department of Physics | Te Tari Hū-o-te-Kōhao

Animals magnified: Explore the fine details of some of Dunedin's amazing wildlife. Use a microscope to investigate aspects of our local fauna, as well as other mystery animals that are normally invisible to the naked eye. Test your knowledge on native and introduced species of lizards, birds, and bees commonly found in your own backyard.
Department of Zoology | Te Tari Mātai Kararehe

For more information, visit:
scifest.org.nz/programme/expo

University of Otago Business School
Corner of Clyde Street and Union Street East
Saturday 28 June, 10am–4pm | Sunday 29 June, 10am–2pm
Free entry



University
of Otago
ŌTĀKOU WHAKAIHU WAKA

HANDS-ON



THE WIZARD'S APPRENTICE: A MAGICAL SCIENCE MYSTERY 🗺️ ●

TUE 1 TO SUN 6 JULY • 10AM, 11AM, 12PM, 1PM, 2PM • 45MIN
FESTIVAL HUB • \$12

Calling all apprentice wizards and magical detectives! Step into a world of mystery, spells, and secret codes in *The Wizard's Apprentice: A Magical Forensic Mystery*.

The Chief Sorcerer has vanished – and it's up to you to uncover the clues, analyse the evidence, and crack the case! With puzzles to solve, forensic tools to use, and magical mayhem to unravel, don't miss this immersive Science of Crime adventure!



HUNT FOR THE AURORA TAHU-NUI-A-RANGI! ●

SAT 28 JUNE TO SUN 6 JULY • 10AM – 4PM
DUNEDIN BOTANIC GARDEN VISITOR CENTRE • DROP IN • FREE

Join in an aurora-inspired scavenger hunt at the Dunedin Botanic Garden! Learn about the science and pūrākau of aurora australis/Te Tahu-nui-a-rangi as you seek out artworks made by local tamariki.

Clay tiles showing tamariki's interpretations of the aurora will be hidden around the gardens. Use your treasure map to find them!



HEARTOTAGO DISSECTION LAB 🗺️ ●●●

TUES 1 JULY | 10AM, 2PM • WED 2 JULY | 6PM • THU 3 JULY | 10AM
90MIN • UNIVERSITY OF OTAGO – DEPARTMENT OF PHYSIOLOGY • FREE

The ever-popular Heart Dissection Labs are back for 2025! Participants will dissect a lamb's heart, and learn the basic physiological functions of the heart, with the expert HeartOtago crew guiding the way!



CAN YOU BEAT THE BUZZ? ●

SUN 29 JUNE • 10AM – 3PM • GOLDEN CENTRE • DROP IN • FREE

Step right up and take on our two-metre long life-size buzz wire game – can you beat the buzz with your steady hands?

Plus, get charged up with some creative face painting and hands-on activities to match your electric vibe!



WONDER PROJECT ROCKET LAUNCH OFF

SUN 29 JUNE • 10AM – 2PM • LOGAN PARK, UNIVERSITY OVAL • FREE

Join the Wonder Project for a water rocket launch competition for local businesses, schools and individuals. Compete for the best launch with prizes up for grabs!

Plus learn more about this STEM education initiative for schools across Aotearoa.



HARNESSING BRAINWAVES FOR MEDITATIVE MASTERY

MON 30 JUNE, TUE 1, WED 2 JULY • 9.30AM – 1PM • EVERY 30MINS
TŪHURA OTAGO MUSEUM, HUTTON THEATRE • FREE

Imagine effortlessly drifting into a state of deep relaxation and heightened awareness. With commercial neurofeedback technology, you can learn to self-regulate your brain waves and achieve meditative states. While comfortably seated with eyes closed, you will wear an electrode cap that records your brain waves, and emits a soothing tone when your brain activity reaches the desired meditative brainwave frequency.

Due to the size of the cranial caps, this workshop is adults only.



BUILD BEAM BRISTLEBOTS

MON 30 JUNE, TUE 1 JULY • 10AM, 11.15PM • 60MIN • \$5
MON 30 JUNE, TUE 1 JULY • 2PM • 2HR • \$10 • GASWORKS MUSEUM

In the introductory one-hour morning session, you'll make a simple rechargeable robot that looks and acts like a butterfly (but can't actually fly!). Young children will need parental assistance and supervision.

In the advanced two hour afternoon session, you'll learn what transistors do in a circuit and use them to make a moth robot that will follow a light.

To attend an afternoon session you'll need to be in at least year 7 at school and have attended a morning session. The robots that you build are yours to keep. See the online programme for full details.

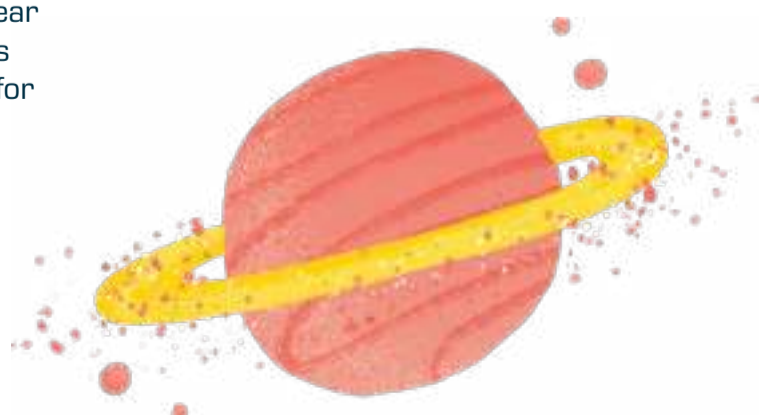


HEART SCIENCE FOR KIDS

TUE 1 JULY • 10AM • 60MIN • MOSGIEL LIBRARY • FREE
WED 2 JULY • 10AM, 1PM • 60MIN • DUNEDIN PUBLIC LIBRARY • FREE

In this hands-on interactive session, you'll learn all about hearts and find the answer to questions such as: How does the heart work? What makes the heart beat? Is a mouse heart the same as a whale heart? Can we measure what happens when you exercise?

This one-hour workshop is suitable for children aged 6-10 years.



HANDS-ON



SEASONS IN THE SEA

TUE 1 JULY • 10AM • 4HR
UNIVERSITY OF OTAGO - NZ MARINE STUDIES CENTRE • \$10

Collect and analyse plankton samples with marine scientists!

Help the NZ Marine Studies Centre with their participatory science project, tracking the seasonal changes of plankton in the Otago Harbour.

Plankton are a wide and varied group of organisms that play vital roles in our marine ecosystem. Plankton occurrence and abundance is directly linked with their surrounding environmental conditions. As the climate is changing, it's more important than ever to monitor plankton for seasonal cycles.



SECRETS, CIPHERS, AND QUANTUM CODEBREAKERS

TUE 1, THU 3 JULY • 11.30AM – 2PM • THE OCTAGON • DROP IN • FREE

Get hands-on with the science of secret-keeping and code-cracking, and find how tiny shiny particles and their quantum properties will unlock the next great leap forward for technology in these fields.

Recommended for anyone who loves solving puzzles – mathiness is optional!



SESTINAS FOR SCIENCE

TUE 1 JULY • 1PM • 2HR
DUNEDIN PUBLIC LIBRARY, DUNNINGHAM SUITE • \$15 | \$7.50

Poets have long written about scientific concepts, just as scientists have also been poets. Sestinas are a form of poetry with six stanzas of six lines and one stanza of three lines. The intricate pattern uses a repetition of six words throughout the stanzas, allowing for writers and readers to deeply connect to a topic.

You will read examples, collaborate, and write individual sestinas, focused on a science topic from astronomy to zoology. Suitable for poets and scientists alike who enjoy a bit of a challenge.



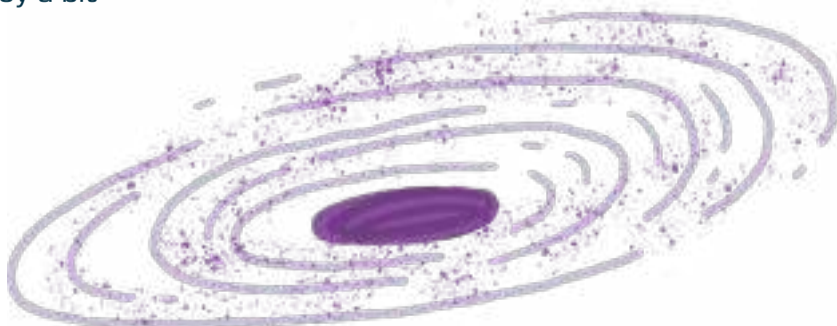
FIGHT LIKE A PHYSICIST

TUE 1 JULY • 2PM • 60MIN • DUNEDIN PUBLIC LIBRARY, DUNNINGHAM SUITE
SAT 5 JULY • 10AM, 1PM • 60MIN • MOSGIEL LIBRARY • FREE

Spoiler alert: The physicist wins!

In this workshop, you will learn the basics of the martial arts karate, covering the underlying physics of karate movements and techniques.

No experience is necessary, come with an open mind and comfy clothes and be prepared to move! All ages welcome.





GENE HUNTING IN RARE DISEASE



WED 2 JULY • 2PM • 3HR
UNIVERSITY OF OTAGO - BIOCHEMISTRY DEPARTMENT • FREE

This workshop will use a teaching resource available to teachers through Genetics Otago to introduce basic methods to filter potential disease-causing variants from an individual's whole genome, a cutting-edge technique used to diagnose rare, genetic disorders.

You will use a real-life example from a New Zealand family to demonstrate the process and introduce the basics of computer-based filtering, inheritance and disease, and carry out a basic experiment. Although aimed at high school teachers, any teens or adults who are interested are welcome to join.



WRITE YOUR OWN SCIENCE POETRY



WED 2 JULY • 2PM • 2HR 30MIN
TŪHURA OTAGO MUSEUM, H.D. SKINNER ANNEX • \$20 | \$30

Join Rachel Rayner, Science Explainer, on a whimsical journey through the realms of science poetry. Dive into the rules and methods of poetry (so we know what we want to break) and enjoy some highlights from the thriving science poetry scene. Discuss some new science research and write creatively from a plethora of stimuli.

You will discover how to fold scientific shine or poetic flourish into your own writing – perhaps even finding new sources of inspiration.

DUNEDIN RAILWAYS

In partnership with:

TŪHURA
Otago Museum

THE STARGAZER

Thu 19 June & Fri 27 June only • [Book now at www.dunedinrailways.co.nz](http://www.dunedinrailways.co.nz)

In collaboration with:

HANDS-ON



MARINE METRE²

WED 2 JULY • 2.30PM • 90MIN
UNIVERSITY OF OTAGO - NZ MARINE STUDIES CENTRE • FREE

Get to know your seashore neighbours!

Help the New Zealand Marine Studies Centre monitor the shore with Marine Metre²! See what animals and seaweeds you can identify, and find out how your data will add to our national database to help us understand Aotearoa New Zealand's unique seashore.

Explore the seashore of Otago Harbour, discover how to map it in 3D, and learn what we can do to care for it.



FORCES AT PLAY

FRI 4 JULY • 1PM • 2HR • NEW ATHENAEUM THEATRE • \$10 | \$20

Ever thought that physics sounds cool but is too hard to understand? In this all-ages workshop, learn abstract physics concepts through physicalisation and theatre. No lectures. No equations. No physics knowledge required. No performance experience required.

Pure curiosity and enthusiasm is all you need.

Improsaurus will also be presenting the improvised play, *Entangled*, for the festival, and workshop attendees will get discounted tickets.



CITSCINZ BIOBLITZ

SAT 5 JULY • 10AM • 4HR • WOODHAUGH GARDENS • FREE

Keen to know what's living in your backyard, or on your school grounds? Learn how to run a bioblitz! Join Taylor Davies-Colley from Orokonui Ecosanctuary and Michelle Neil from the Great Southern Bioblitz on a family-friendly adventure to uncover the magic of nature-ID apps, how to use them to learn about and document wildlife and then go on a discovery walk to explore the surrounding wildlife.

A fun day out for everyone – all you need is a phone and your curiosity!

Rainy day backup is Sunday 6 July – please check the online listing of this event for the latest updates.



MAGNETIC LEAVES BIOBLITZ

SUN 6 JULY • 11AM • 4HR • WOODHAUGH GARDENS • FREE

Have an unique citizen science experience! Explore the Woodhaugh Gardens to identify plant species and uncover the hidden story of Dunedin's air quality.

Plant leaves collect magnetic airborne particles from vehicle pollution. By measuring the magnetic properties of leaves, we can assess air pollution levels in different settings – and we need your help to do it!

You will learn the basics of biomagnetic monitoring, explore the plant life in the Woodhaugh Gardens, and contribute to a real scientific investigation.

This is a family-friendly event – all ages are welcome.

WHAT'S ON AT TŪHURA OTAGO MUSEUM



GLITTER SLIME WORKSHOP

SAT 28, SUN 29 JUNE • 10AM – 1PM • ATRIUM LEVEL 1 • \$5

Blast off into a universe of squishy, stretchy fun with our Galactic Slime Workshop! In this hands-on workshop, families can create their own cosmic slime filled with swirls of glitter, stars, and out-of-this-world colours.

This slimetastic activity is messy in the best way and full of creativity. Come make your own gooey galaxy and take it home in a slime-safe container! All materials will be provided, bookings essential.



MELTY BEADS FRAME WORKSHOP

THU 3 TO SAT 5 JULY • 10AM – 1PM • ATRIUM LEVEL 1 • \$5

Get ready to melt your creativity into something frame-worthy! Join us for a hands-on Melty Beads Frame Workshop where you'll design and create your very own colorful picture frame using perler beads.

Whether you're crafting a gift or just want a fun, nostalgic activity, this workshop is perfect for makers of all ages and skill levels. Book early to secure your spot!



INTO THE VAULTS COLLECTIONS TOUR

MON 30 JUNE • 10AM, 11AM, 1PM • MEET AT INFO DESK • \$15 | \$20

Ever wondered what treasures lie behind closed doors at the Museum? Now's your chance to step off the public path and explore the unseen wonders of our vast collection! Join this exclusive behind-the-scenes tour to see some of the hidden gems, rare specimens, and fascinating artefacts housed in our natural science and humanities collections.

Ages 10+. Under 15s must be accompanied by a parent or guardian.



MIDWINTER MAKERSPACE

SAT 28 JUNE TO FRI 4 JULY • 10AM – 5PM • ATRIUM LEVEL 1 • DROP IN • FREE

Escape the winter chill and pull up a chair at our cosy Midwinter Makerspace! You can create a constellation card with sparkling stars to mark Matariki, design your own colourful auroras with chalk, or craft a collage inspired by the natural world.

All ages are welcome, and materials are provided. Just bring your imagination!

TŪHURA
Otago Museum

419 Great King St, Dunedin | Ph 03 474 7474
More events, tickets and info at tuhura.nz

EXHIBITIONS



RURUKU

SAT 28 JUNE, TUE 1 TO SAT 5 JULY • 10AM – 5PM
DROP IN • HOCKEN COLLECTIONS • FREE

Ruruku, an exhibition by Hauteruruku ki Puketeraki waka club, celebrates kaupapa waka with visual storytelling and taoka from Hauteruruku ki Puketeraki, a community and whānau-based waka club based in Karitāne.

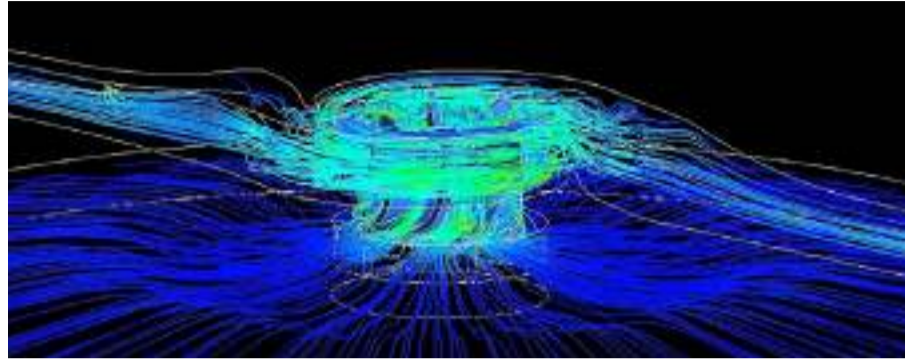
Named for the community-led Ruruku Project which brought to life the club's third traditional sailing waka, *Kuramātakitaki*, the show celebrates waka, raraka, and honoka across Te Waipounamu, Aotearoa and Te Moananui-a-Kiwa, and the revival of waka traditions in the 21st century.

Exhibition - 10am-5pm, Sat 28 June, Tue 1 - Sat 5 July

Guided tours - 11am, 45min, Wed 2 and Sat 5 July

Workshop - 11am, 2hr, Sat 28 June

Make mini waka from traditional and contemporary resources, have a go at making waka taura (four-plait rope), and have your photo taken with *Kuramātakitaki* waka!



THE SCIENCE BEHIND EVERYDAY APPLIANCES

TUE 1 TO THU 3 JULY • 12PM – 1PM • WALL STREET MALL • FREE

See product exhibitions showcasing Fisher & Paykel innovations. Watch dishwashers with clear doors in action, shooting water into the air and showcasing their cleaning power. Enjoy videos explaining the science behind cooking and dishwashing, and learn why not to use dishwashing liquid in your dishwasher! See our advanced cooktop running Minecraft, showing its versatility.

Don't miss this chance to discover how Fisher & Paykel's technology transforms your daily life.

All ages welcome.



BEE CREATIVE: EXHIBITION AND WORKSHOPS

MON 30 JUNE TO FRI 4 JULY • 10AM – 3PM
DROP IN • DUNEDIN COMMUNITY GALLERY • FREE

Come see an exhibition of community-created banners and learn about native bees! Take part in daily in-gallery activities including make-your-own flower cards, creating your own bee-garden fabric patch or tote bag and more...



30 YEARS OF PAKAKE: ALL OUR STORIES

THU 3 TO SUN 6 JULY • 10AM – 5PM • DROP IN • MERIDIAN MALL • FREE

Celebrate 30 years of sea lion pups born on the mainland!

This exhibition displays stories and art celebrating 30 years of breeding sea lions returning to the mainland. Discover what our local sea lions eat, make your own pakake to take home, submit a story to the living library, and much more. Bring your whānau along to this free event with activities for all ages.



THE FUTURE OF GENE TECHNOLOGY

TUE 1 JULY • 5.30PM • 75MIN • TE WHARE O RUKUTIA • PWYW

With new gene technology regulations working their way through parliament, hear from researchers in different fields about what the new legislation might mean for everyday Kiwis. The panellists will discuss what kinds of new research, products and technologies the bill might enable, and what kinds of oversight and regulation will guide this innovation.



CAREERS IN SPACE: WOMEN SHAPING AOTEAROA'S FUTURE IN STEM

TUE 1 JULY • 5.30PM • 60MIN • OMBRELLOS • FREE

What does it take to launch a career in space science – and who gets to go on that journey? Discover exciting career paths in space science and hear from inspiring women working in Aotearoa's space sector.

In this special panel, NASA's Dr Michelle Thaller joins leading Kiwi voices to explore the future of space careers and women in STEM. Local experts will share diverse journeys into Aotearoa's growing space sector and let your curiosity take flight! Space is closer than you think!

Co-hosted by Thirst for Knowledge and Women in Space Aotearoa New Zealand.



THE TECHNICAL STORYTELLER

WED 2 JULY • 5.30PM • 60MIN • UNIVERSITY BOOK SHOP • FREE

You don't need to be an expert to appreciate Otago's engineering heritage. Join award-winning author and engineer Karen Wrigglesworth as she launches her newest book *Take Me With You 3!*. Written in an engaging, storytelling voice with 'engineer's eye' photos by the author, these books really do encourage you to take them with you and explore engineering stories hidden in plain sight.

Books will be available for purchase from the University Book Shop and Karen will be signing copies on the night.

Take Me With You 3! received a Charles Fleming Publishing Award from the Royal Society of NZ.

TALKS



COASTAL PARASITES THE GOOD, THE BAD, AND THE UGLY

THU 3 JULY • 4PM • 60MIN • TŪHURA OTAGO MUSEUM • FREE

Ko ngā pirinoa o te moana – te pai, te kino, me te anuheā

Almost every animal has its own set of parasites – creatures living on or inside them. In fact, parasites are thought to make up most of the animal species on Earth! They're everywhere, even in our own backyard, Otago's coastal taiao.

While most people know of parasites only for their harmful impact on their hosts, they also give useful clues about how healthy our ecosystem is, and how it is changing. In this kōrero, Dr Bennett will talk about our coastal ecosystems from a parasite perspective, highlighting the 'good', the 'bad', and the 'ugly' sides of parasites infecting our local fauna.

Dr. Jerusha Bennett is July's guest speaker in the Department of Marine Science Seminar Series 2025.



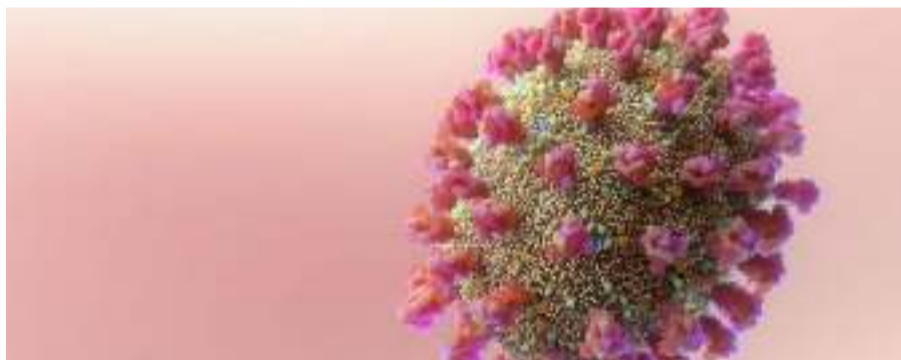
ATUA MATUA: AN EVENING WITH DR IHIRANGI HEKE

FRI 4 JULY • 5.30PM • 75MIN • TE WHARE O RUKUTIA • PWYW

Hear Dr Heke talk about repurposing ancient Māori environmental knowledge into contemporary environmental sustainability, health and well-being.

Atua Matua is a framework rooted in mātauranga Māori environmental knowledge that explores connections between environment and health. The framework has five pillars:

- Environmental Knowledge – Mātauranga
- Māori Localised Environmental Connections – Whakapapa
- Communicating Environmental Knowledge – Huahuatau
- Activities to Mobilise Atua Matua thinking – Whakatinanatanga
- Environmental Signs as a decision making function – Tohutaka



LIFE AFTER COVID

WED 2 JULY • 5.30PM • 75MIN • TE WHARE O RUKUTIA • PWYW

Lessons, challenges and the road ahead.

Professor Shaun Hendy discusses his new book *The Covid Response* in a timely conversation on Aotearoa's pandemic strategy and its global lessons.

Joined by Professors Jemma Geoghegan and Dianne Sika-Paotonu, and chaired by Professor Sir David Skegg, the panel will discuss science, policy, health equity, and pandemic preparedness. Book signings will follow.

Supported by Royal Society Te Apārangi, Bridget Williams Books and Te Pūnaha Matatini.



CLIMATE CHANGE CINEMA

WED 2, THU 3 JULY • 6.30PM • 90MIN • OLVESTON HISTORIC HOME • FREE

Join Max Quinn, one of New Zealand's finest camera artists and director of numerous natural history documentaries, as he shares his unique experiences from his global filmmaking career.

With over a dozen expeditions to Arctic and Antarctic regions, Max has had the rare opportunity to document the profound effects of global warming on these critical environments. In this insightful presentation, he takes you behind the scenes to explore the challenges and rewards of capturing the impact of climate change in some of the most remote parts of the world.

SEE FESTIVAL HUB ON PAGE 11 FOR MORE TALKS



RETURNING TAOKA 🗺️ 🟡 🟠

THU 3, FRI 4 JULY • 4PM • 60MIN • OROKONUI ECOSANCTUARY • PWYW

Join Orokonui staff for a talk about the translocations they have carried out to return lost species to this area. Hear about the highs and lows of this work, and the science behind making these immense projects a success. They will also provide some insights into how the current ambitious project to return Tīeke to Orokonui is going.



SCIENCE ACADEMY- SCIENCE COMMUNICATION EXPO ●

FRI 4 JULY • 3.30PM – 5.30PM
UNIVERSITY OF OTAGO - TEACHERS COLLEGE AUDITORIUM • DROP IN • FREE

Join Year 13 Science Academy students from across New Zealand as they put their science communication skills into action and present short science talks, films, shows, and podcasts.



SONIC SOMMELLERIE: A MULTI-SENSORY WINE ODYSSEY 🗺️ 🟠 🟠 R18

THU 3, FRI 4 JULY • 7PM • 90MIN • VAULT 21 • \$55 | \$45

Discover how different sounds and environments can change the taste of wine. Grounded in cutting-edge crossmodal research – the science of how our senses influence each other – this is wine as you've never experienced it.

Begin in the minimalist canvas of Vault 21's White Room, travel through the neon wonderland of Déjà Vu Eats, and descend into the opulent underground atmosphere of Catacombs nightclub. Each location features especially curated wines paired with specific immersive music and perception shifting soundscapes.

Science never tasted so exciting!

GROWN-UPS



DEATH IN THE DISTILLERY: A FORENSIC MYSTERY 🗺️ 🟠 🟠 R18

SAT 28 JUNE TO SUN 6 JULY • 5PM, 8.30PM • 90MIN • NO. 8 DISTILLERY • \$65

Step into the heart of a working distillery and uncover a deadly secret. When a local gin maker is found dead under mysterious circumstances, it's up to you to crack the case. Use real forensic tools, solve puzzles, analyse evidence, and unravel the clues to expose the killer. Team up with friends, coworkers, or family for an immersive experience that will unleash your inner detective! Includes a complimentary welcome drink.

Created by a New Zealand forensic expert and set in No.8 Distillery, where award-winning spirits blend tradition and craft.

GROWN-UPS



GIN MAKING WORKSHOP



SAT 28 JUNE, SAT 5 JULY • 2PM • 3HR • NO. 8 DISTILLERY • \$65

Join the No.8 distiller for an immersive gin-making workshop and uncover the art of distillation.

Guided through the process, you'll create your own personalised gin or vodka infused with locally foraged native botanicals. Along the way, enjoy samples of their award-winning spirits, making this a journey of creativity, flavour, and discovery.



GETTING THE MEASURE OF ALCOHOL



SAT 28 JUNE • 6.30PM • 40MIN • DUNEDIN CRAFT DISTILLERS • FREE

Where does alcohol come from? What is it and why and how do we measure it? Join us for a whirlwind tour and discussion over a drink or two. We begin in pre-history and end here in Dunedin today. Along the way, we'll visit cultures from around the world, meet some colourful characters and introduce the rationale for, and the science behind, alcohol measurement.

Our bar is open from 6pm - 9pm for drinks and light refreshments. Presentation begins at 6.30pm and runs for about 40 minutes.



CITSCINZ NETWORKING STORM



THU 3 JULY • 5.30PM • 90MIN • TE WHARE O RUKUTIA • FREE

Are you running a Citizen Science project or interested in being a part of one? Join us for an evening of exciting conversation, learning, and networking for Citizen Scientists! Connect to other enthusiasts, learn about new and exciting project opportunities and tools in Citizen Science, and have a lovely evening of networking and fun!



WOMEN IN SCIENCE BRUNCH



SUN 6 JULY • 10.30AM - 12.30PM • DEJA VU EATS • \$45

Calling all women in science! Treat yourself to a delightful Sunday morning brunch, some casual networking, and short talks from women working in a wide range of science careers.

Our speakers will talk about how they find inspiration in the world of science and share their insights and ideas that help them persevere through challenging times.

Join us for some laughs and life lessons, meet other women in science from the Dunedin area, and of course, eat pancakes and drink mimosas (or just orange juice)! While this event is focused on women in science, all are welcome to attend.



GENERAL INFORMATION

Each event listing has details about the venue, performance dates, times, approximate duration and ticket prices. Many events will sell out so book in early to avoid disappointment.

TICKETS

All ticketed events need to be booked through the Festival website scifest.org.nz. All ticket prices include GST and booking fees.

Concession prices are available for some events for students, beneficiaries and senior citizens. Appropriate ID must be provided at the venue.

FREE EVENTS

Many of our free events need a ticket which you can book through the Festival's website. There is no charge or booking fee for these tickets.

REFUNDS AND CANCELLATIONS

Tickets cannot be refunded but are transferrable so if you are no longer able to attend, you can give your ticket to someone else. If an event is cancelled, full refunds will be issued.

SEATING

All events are general admission. Please arrive early if you have special seating requirements.

CHILDREN

All attendees under the age of 14 must be accompanied by an adult unless otherwise stated in the event listing.

COVID-19

We are aware that COVID-19 remains active in our community. If you are feeling unwell, please stay home. Masks are welcome at all Festival events and will be available at some venues.

PROGRAMME UPDATES

At the time of printing, programme details were correct. However, changes may occur after publication so please check the Festival website scifest.org.nz for the latest information.

FESTIVAL TEAM

Jerome Cousins
Festival Director

Andrea Liberatore
Associate Director

Willow de Jonge
Production Manager

Hannah Molloy
Marketing Manager

Annah Taggart
Designer | Cover Illustration

EXECUTIVE COMMITTEE

Angela Clark, President

Peter Jones, Vice President

Wendy Swainson, Treasurer

Michele Coleman

Suzi Flack

Mike Harte

Bridget Irving

Helen Nicholson

Gianna Savoie

Caroline Orchiston

Daniel Pritchard



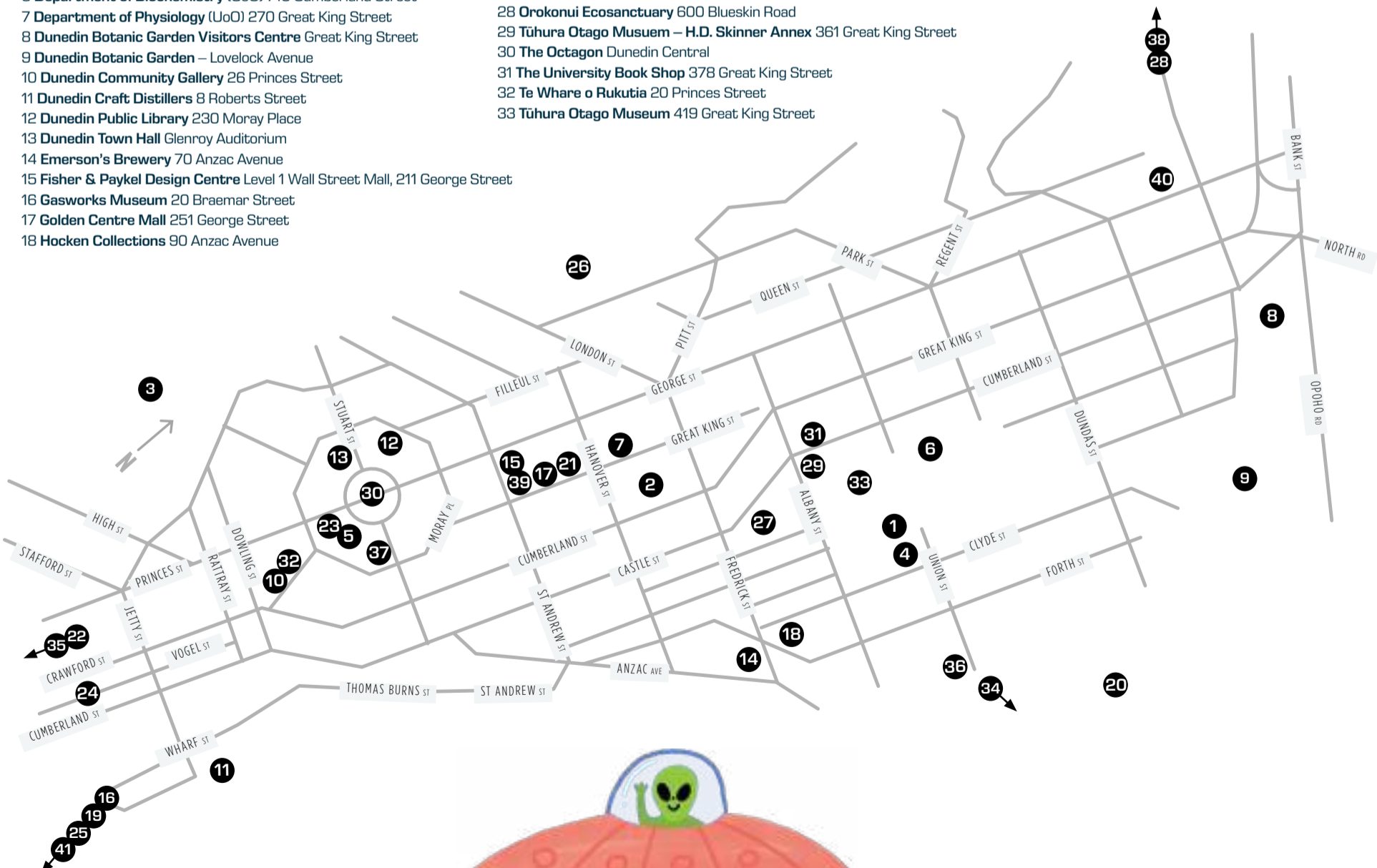
@nzscifest
programmes@scifest.org.nz

VENUES

- 1 Allen Hall Theatre (UoO) 350 Leith Walk
- 2 Barnett Lecture Theatre Dunedin Hospital, 201 Great King Street
- 3 Beverly-Begg Observatory 1A City Rd, Belleknowes
- 4 Business School (UoO) 60 Clyde Street
- 5 Deja Vu Eats 115 Stuart Street
- 6 Department of Biochemistry (UoO) 710 Cumberland Street
- 7 Department of Physiology (UoO) 270 Great King Street
- 8 Dunedin Botanic Garden Visitors Centre Great King Street
- 9 Dunedin Botanic Garden – Lovelock Avenue
- 10 Dunedin Community Gallery 26 Princes Street
- 11 Dunedin Craft Distillers 8 Roberts Street
- 12 Dunedin Public Library 230 Moray Place
- 13 Dunedin Town Hall Glenroy Auditorium
- 14 Emerson's Brewery 70 Anzac Avenue
- 15 Fisher & Paykel Design Centre Level 1 Wall Street Mall, 211 George Street
- 16 Gasworks Museum 20 Braemar Street
- 17 Golden Centre Mall 251 George Street
- 18 Hocken Collections 90 Anzac Avenue

- 19 KiwiRail Hillside Workshops 200 Hillside Road
- 20 Logan Park – University Oval 30 Logan Park Drive
- 21 Meridian Mall (upstairs) 285 George Street
- 22 Mosgiel Library 7 Hartstonge Ave, Mosgiel
- 23 New Athenaeum Theatre 23 The Octagon
- 24 No. 8 Distillery 90 Bond Street
- 25 NZ Marine Studies Centre (UoO) 185 Hatchery Rd, Portobello
- 26 Olveston Historic Home 42 Royal Terrace
- 27 Ombrellos Kitchen & Bar 10 Clarendon Street
- 28 Orokonui Ecosanctuary 600 Blueskin Road
- 29 Tūhura Otago Musuem – H.D. Skinner Annex 361 Great King Street
- 30 The Octagon Dunedin Central
- 31 The University Book Shop 378 Great King Street
- 32 Te Whare o Rukutia 20 Princes Street
- 33 Tūhura Otago Museum 419 Great King Street

- 34 Port To Port Cruises 39 Peninsula Beach, Port Chalmers
- 35 Scott Technology 630 Kaikorai Valley Road
- 36 Teacher's College Auditorium (UoO) 145 Union St East
- 37 Vault 21 21 the Octagon
- 38 Waitati Hall 26 Harvey Street, Waitati
- 39 Wall Street Mall 211 George Street
- 40 Woodhaugh Gardens 1081 George Street
- 41 The OPERA 45 Pakihau Road, Portobello, Harington Point



TIMETABLE

SATURDAY 28 JUNE

10am	Ruruku Exhibition , Hocken Collections
10am	Hunt for the aurora/Tahu-nui-a-rangi! , Dunedin Botanic Garden
11am	Ruruku Waka Workshop , Hocken Collections
11.30am	Sip & Science - Emerson's Brewery Tour , Emerson's Brewery
1pm	Into the Green: Nature for Wellbeing , Woodhaugh Gardens
1pm	Sip & Science - Emerson's Brewery Tour , Emerson's Brewery
2pm	Gin-Making Workshop , No. 8 Distillery
4pm	Sip & Science - Emerson's Brewery Tour , Emerson's Brewery
5pm	Death in the Distillery: A Forensic Mystery , No. 8 Distillery
5.30pm	Sip & Science - Emerson's Brewery Tour , Emerson's Brewery
6pm	Getting the Measure of Alcohol , Dunedin Craft Distillers
6pm	New Discoveries, New Connections , Teachers College Auditorium (UoO)
6pm	Getting the Measure of Alcohol , Dunedin Craft Distillers
7pm	Sip & Science - Emerson's Brewery Tour , Emerson's Brewery
8pm	Death in the Distillery: A Forensic Mystery , No. 8 Distillery

SUNDAY 29 JUNE

10am	Can You Beat the Buzz? , Golden Centre Mall
10am	Marine Encounters , NZ Marine Studies Centre (UoO)
10am	Wonder Project Rocket Launch Off , Logan Park - University Oval
10am	Hunt for the aurora/Tahu-nui-a-rangi! , Dunedin Botanic Garden
10.30am	Ask Me Anything! (About Space...) , Teachers College Auditorium (UoO)
12pm	Marine Encounters , NZ Marine Studies Centre (UoO)
2pm	What is Quantum Technology? , Teachers College Auditorium (UoO)
3pm	Science at the OPERA , The OPERA
4pm	Sip & Science - Emerson's Brewery Tour , Emerson's Brewery
5pm	Death in the Distillery: A Forensic Mystery , No. 8 Distillery
5.30pm	Sip & Science - Emerson's Brewery Tour , Emerson's Brewery
7pm	Sip & Science - Emerson's Brewery Tour , Emerson's Brewery
8pm	Death in the Distillery: A Forensic Mystery , No. 8 Distillery

MONDAY 30 JUNE

10am	BEE Creative: Exhibition and workshops , Dunedin Community Gallery
10am	Build BEAM bristlebots , Gasworks Museum
10am	Harnessing Brainwaves , Hutton Theatre, Tūhura Otago Museum
10am	Hunt for the aurora/Tahu-nui-a-rangi! , Dunedin Botanic Garden
10.30am	Harnessing Brainwaves , Hutton Theatre, Tūhura Otago Museum
11am	Harnessing Brainwaves , Hutton Theatre, Tūhura Otago Museum
11.15am	Build BEAM bristlebots , Gasworks Museum
11.30am	Harnessing Brainwaves , Hutton Theatre, Tūhura Otago Museum
2pm	Build BEAM bristlebots , Gasworks Museum
3.30pm	Scott Technology Workshop Tour , Scott Technology
5pm	Death in the Distillery: A Forensic Mystery , No. 8 Distillery
5.30pm	The Return of Quantum Shorts , Planetarium, Tūhura Otago Museum
8pm	Death in the Distillery: A Forensic Mystery , No. 8 Distillery

TUESDAY 1 JULY

9.30am	Science Storytime with UBS , Festival Hub
10am	Imagination Playground , Festival Hub
10am	Sustainable keyboard artplay , Festival Hub
10am	Connecting and Taking Action Together , Festival Hub
10am	BEE Creative: Exhibition and workshops , Dunedin Community Gallery
10am	Build BEAM bristlebots , Gasworks Museum
10am	HeartOtago dissection lab , Department of Physiology (UoO)
10am	Heart Science for Kids , Mosgiel Library
10am	Science Alive: Hands on Science! , Festival Hub
10am	Backyard Biodiversity , Golden Centre Mall
10am	Science Alive Shop , Festival Hub
10am	Volcano Explorers: Aotearoa New Zealand , Festival Hub
10am	The Wizard's Apprentice: A Magical Science Mystery , Festival Hub
10am	Ruruku Exhibition , Hocken Collections
10am	Harnessing Brainwaves , Hutton Theatre, Tūhura Otago Museum
10am	Seasons in the Sea , NZ Marine Studies Centre (UoO)
10am	Robotics. Automation. Innovation. Festival Hub
10am	Intriguing Koura , Festival Hub
10am	Alternative Operating System Exhibition , Festival Hub
10am	Hunt for the aurora/Tahu-nui-a-rangi! , Dunedin Botanic Garden
10.30am	Harnessing Brainwaves , Hutton Theatre, Tūhura Otago Museum
11am	Sustainable keyboard artplay , Festival Hub
11am	The Wizard's Apprentice: A Magical Science Mystery , Festival Hub
11am	Harnessing Brainwaves , Hutton Theatre, Tūhura Otago Museum
11.15am	Build BEAM bristlebots , Gasworks Museum
11.30am	Secrets, Ciphers, and Quantum Codebreakers , The Octagon
11.30am	Harnessing Brainwaves , Hutton Theatre, Tūhura Otago Museum
12pm	The Wizard's Apprentice: A Magical Science Mystery , Festival Hub
12pm	The Science Behind Everyday Appliances , Wall Street Mall
12pm	Let's Talk CitSci Mini-Talk , Festival Hub - Seminar Space
1pm	Sestinas for Science , Dunningham Suite, Dunedin Public Library
1pm	The Wizard's Apprentice: A Magical Science Mystery , Festival Hub
2pm	Build BEAM bristlebots , Gasworks Museum
2pm	Making Internet History More Visible , Festival Hub Seminar Space
2pm	Fight Like a Physicist , Mosgiel Library
2pm	HeartOtago dissection lab , Department of Physiology (UoO)
2pm	Into the Green: Nature for Wellbeing , Woodhaugh Gardens
2pm	The Wizard's Apprentice: A Magical Science Mystery , Festival Hub
5pm	Death in the Distillery: A Forensic Mystery , No. 8 Distillery
5.30pm	Careers in Space: Women Shaping Aotearoa's Future in STEM , Ombrellos
5.30pm	The Future of Gene Technology , Te Whare o Rukutia
6pm	Sip & Science - Emerson's Brewery Tour , Emerson's Brewery
7.30pm	A Flying Photon , Te Whare o Rukutia
8pm	Death in the Distillery: A Forensic Mystery , No. 8 Distillery

WEDNESDAY 2 JULY

9am	Hillside Workshops Tour , Hillside Workshops
9.30am	Science Storytime with UBS , Festival Hub
10am	Imagination Playground , Festival Hub
10am	Sustainable keyboard artplay , Festival Hub
10am	BEE Creative: Exhibition and workshops , Dunedin Community Gallery
10am	Heart Science for Kids , Dunningham Suite, Dunedin Public Library
10am	Science Alive: Hands on Science! , Festival Hub
10am	Backyard Biodiversity , Golden Centre Mall
10am	Science Alive Shop , Festival Hub
10am	The Wrath of Quench! , Festival Hub
10am	Dr Rock , Festival Hub
10am	Volcano Explorers: Aotearoa New Zealand , Festival Hub
10am	The Wizard's Apprentice: A Magical Science Mystery , Festival Hub
10am	Visit Innovation! , Fisher & Paykel Design Centre
10am	Ruruku Exhibition , Hocken Collections
10am	Harnessing Brainwaves , Hutton Theatre, Tūhura Otago Museum
10am	Robotics. Automation. Innovation , Festival Hub
10am	Intriguing Koura , Festival Hub
10am	Science in the Town Belt , Festival Hub
10am	Alternative Operating System Exhibition , Festival Hub
10am	Hunt for the aurora/Tahu-nui-a-rangi! , Dunedin Botanic Garden
10.30am	Meet Maria Skłodowska-Curie! , Festival Hub Seminar Space
10.30am	Harnessing Brainwaves , Hutton Theatre, Tūhura Otago Museum
10.30am	Te Tahu-Nui-a-Rangi (Aurora) clay tile making , Festival Hub
11am	Sustainable keyboard artplay , Festival Hub
11am	Making Internet History More Visible , Festival Hub Seminar Space
11am	The Wizard's Apprentice: A Magical Science Mystery , Festival Hub
11am	Visit Innovation! , Fisher & Paykel Design Centre
11am	Harnessing Brainwaves , Hutton Theatre, Tūhura Otago Museum
11am	Ruruku Exhibition Guided Tours , Hocken Collections
11.30am	Harnessing Brainwaves , Hutton Theatre, Tūhura Otago Museum
12pm	The Wrath of Quench! , Festival Hub
12pm	The Wizard's Apprentice: A Magical Science Mystery , Festival Hub
12pm	The Science Behind Everyday Appliances , Wall Street Mall
12pm	Let's Talk CitSci Mini-Talk , Festival Hub Seminar Space
1pm	Heart Science for Kids , Dunedin Public Library, Dunningham Suite
1pm	The Wizard's Apprentice: A Magical Science Mystery , Festival Hub
1.30pm	Magical Molecule Tour , Biochemistry Department (UoO)
1.30pm	Hillside Workshops Tour , Hillside Workshop
1.30pm	Te Tahu-Nui-a-Rangi (Aurora) clay tile making , Festival Hub
2pm	Write Your Own Science Poetry , Otago Museum - H.D. Skinner Annex
2pm	The Wrath of Quench! , Festival Hub - Workshop
2pm	The Wizard's Apprentice: A Magical Science Mystery , Festival Hub
2pm	Visit Innovation! , Fisher & Paykel Design Centre
2pm	Gene Hunting in Rare Diseases , Biochemistry Department (UoO)
2.30pm	Get to know your seashore neighbours! , NZ Marine Studies Centre (UoO)
3pm	Visit Innovation! , Fisher & Paykel Design Centre
5pm	Death in the Distillery: A Forensic Mystery , No. 8 Distillery
5.30pm	Celebrate Otago's engineering heritage: Book launch , University Book Shop
5.30pm	Life after Covid: Lessons, challenges and the road ahead , Te Whare o Rukutia
6pm	HeartOtago dissection lab , Department of Physiology (UoO)
6pm	Sip & Science - Emerson's Brewery Tour , Emerson's Brewery
6.30pm	Climate Change Cinema , Olveston Historic Home
7.30pm	An Introvert's Guide to Extroverts , Barnett Lecture Theatre, Dunedin Public Hospital
7.30pm	A Flying Photon , Te Whare o Rukutia
8pm	Death in the Distillery: A Forensic Mystery , No. 8 Distillery

THURSDAY 3 JULY

9.30am	Science Storytime with UBS , Festival Hub
10am	Imagination Playground , Festival Hub
10am	Sustainable keyboard artplay , Festival Hub
10am	Connecting and Taking Action Together , Festival Hub
10am	BEE Creative: Exhibition and workshops , Dunedin Community Gallery
10am	HeartOtago dissection lab , Department of Physiology (UoO)
10am	Hands-on Renewable Energy Workshop , Festival Hub
10am	Into the Green: Nature for Wellbeing , Woodhaugh Gardens
10am	30 Years of Pakake: All Our Stories , Meridian Mall
10am	Science Alive: Hands on Science! , Festival Hub
10am	Backyard Biodiversity , Golden Centre Mall
10am	Science Alive Shop , Festival Hub
10am	Dr Rock , Festival Hub
10am	Volcano Explorers: Aotearoa New Zealand , Festival Hub
10am	The Wizard's Apprentice: A Magical Science Mystery , Festival Hub
10am	Who Killed the Kiwi? , Festival Hub
10am	Ruruku Exhibition , Hocken Collections
10am	Robotics. Automation. Innovation , Festival Hub
10am	Alternative Operating System Exhibition , Festival Hub
10am	Hunt for the aurora/Tahu-nui-a-rangi! , Dunedin Botanic Garden
10.30am	Meet Maria Skłodowska-Curie! , Festival Hub Seminar Space
11am	Sustainable keyboard artplay , Festival Hub
11am	The Wizard's Apprentice: A Magical Science Mystery , Festival Hub
11.30am	Secrets, Ciphers, and Quantum Codebreakers , The Octagon
12pm	Living Alongside Pakake , Festival Hub
12pm	The Wizard's Apprentice: A Magical Science Mystery , Festival Hub
12pm	The Science Behind Everyday Appliances , Wall Street Mall
12pm	Let's Talk CitSci Mini-Talk , Festival Hub Seminar Space
1pm	Youth computer hardware workshop , Festival Hub
1pm	The Wizard's Apprentice: A Magical Science Mystery , Festival Hub
2pm	Seasons in the Sea Seminar , Festival Hub Seminar Space
2pm	Quantum Grace , Glenroy Auditorium
2pm	The Wizard's Apprentice: A Magical Science Mystery , Festival Hub
2pm	Returning Taoka , Orokonui Ecosanctuary
4pm	Coastal Parasites , Hutton Theatre, Tūhura Otago Museum
5pm	Death in the Distillery: A Forensic Mystery , No. 8 Distillery
5.30pm	CitSciNZ Networking Storm , Te Whare o Rukutia
6pm	Quantum Grace , Glenroy Auditorium
6pm	Sip & Science - Emerson's Brewery Tour , Emerson's Brewery
6.30pm	Climate Change Cinema , Olveston Historic Home
7pm	Sonic Sommellerie: A Multisensory Wine Odyssey , Vault 21
7.30pm	An Introvert's Guide to Extroverts , Barnett Lecture Theatre, Dunedin Public Hospital
7.30pm	Australian Highlights Live - NZ Edition , Te Whare o Rukutia
8pm	Death in the Distillery: A Forensic Mystery , No. 8 Distillery

FRIDAY 4 JULY

9.30am **Science Storytime with UBS**, Festival Hub
 10am **Imagination Playground**, Festival Hub
 10am **Sustainable keyboard artplay**, Festival Hub
 10am **Take Back your Garden**, Festival Hub
 10am **BEE Creative: Exhibition and workshops**, Dunedin Community Gallery
 10am **Heart Hub**, Festival Hub
 10am **Hands-on Renewable Energy Workshop**, Festival Hub
 10am **30 Years of Pakake: All Our Stories**, Meridian Mall
 10am **Science Alive: Hands on Science!**, Festival Hub
 10am **Backyard Biodiversity**, Golden Centre Mall
 10am **Science Alive Shop**, Festival Hub
 10am **Dr Rock**, Festival Hub
 10am **Volcano Explorers: Aotearoa New Zealand**, Festival Hub
 10am **The Wizard's Apprentice: A Magical Science Mystery**, Festival Hub
 10am **Who Killed the Kiwi?**, Festival Hub
 10am **Ruruku Exhibition**, Hocken Collections
 10am **Robotics. Automation. Innovation**, Festival Hub
 10am **Alternative Operating System Exhibition**, Festival Hub
 10am **Hunt for the aurora/Tahu-nui-a-rangi!**, Dunedin Botanic Garden
 10.30am **Meet Maria Skłodowska-Curie!**, Festival Hub Seminar Space
 11am **Sustainable keyboard artplay**, Festival Hub
 11am **The Wizard's Apprentice: A Magical Science Mystery**, Festival Hub
 12pm **Into the Green: Nature for Wellbeing**, Woodhaugh Gardens
 12pm **Living Alongside Pakake**, Festival Hub
 12pm **The Wizard's Apprentice: A Magical Science Mystery**, Festival Hub
 1pm **Youth computer hardware workshop**, Festival Hub
 1pm **The Wizard's Apprentice: A Magical Science Mystery**, Festival Hub
 1pm **Forces at Play**, New Athenaeum Theatre
 2pm **Getting the Measure of Alcohol**, Festival Hub Seminar Space
 2pm **The Wizard's Apprentice: A Magical Science Mystery**, Festival Hub
 3pm **Returning Taoka**, Orokonui Ecosanctuary
 3.30pm **Science Academy: Science Communications Expo**, Teachers College Auditorium (UoO)
 5pm **Death in the Distillery: A Forensic Mystery**, No. 8 Distillery
 5.30pm **Atua Matua: An Evening with Dr Ihirangi Heke**, Te Whare o Rukutia
 5.30pm **Sip & Science - Emerson's Brewery Tour**, Emerson's Brewery
 6pm **Improv: Entangled**, New Athenaeum Theatre
 7pm **Sip & Science - Emerson's Brewery Tour**, Emerson's Brewery
 7pm **Sonic Sommellerie: A Multisensory Wine Odyssey**, Vault 21
 7.30pm **Atomically Correct**, Te Whare o Rukutia
 8pm **Death in the Distillery: A Forensic Mystery**, No. 8 Distillery
 9pm **An Introvert's Guide to Extroverts**, Te Whare o Rukutia

SATURDAY 5 JULY

10am **Imagination Playground**, Festival Hub
 10am **Sustainable keyboard artplay**, Festival Hub
 10am **Youth computer hardware workshop**, Festival Hub
 10am **Take Back your Garden**, Festival Hub
 10am **30 Years of Pakake: All Our Stories**, Meridian Mall
 10am **Science Alive: Hands on Science!**, Festival Hub
 10am **Backyard Biodiversity**, Golden Centre Mall
 10am **Science Alive Shop**, Festival Hub
 10am **Quantum Quest**, Festival Hub
 10am **Dr Rock**, Festival Hub
 10am **The Wizard's Apprentice: A Magical Science Mystery**, Festival Hub
 10am **Ruruku Exhibition**, Hocken Collections
 10am **Pepeketaua of Aotearoa**, Festival Hub
 10am **CitSciNZ Bioblitz**, Woodhaugh Gardens
 10am **Robotics. Automation. Innovation**, Festival Hub
 10am **Alternative Operating System Exhibition**, Festival Hub
 10am **Hunt for the aurora/Tahu-nui-a-rangi!**, Dunedin Botanic Garden
 10.30am **Meet Maria Skłodowska-Curie!**, Festival Hub Seminar Space
 11am **Sustainable keyboard artplay**, Festival Hub
 11am **Renewable Energy Pop-up Science Station**, Festival Hub
 11am **The Wizard's Apprentice: A Magical Science Mystery**, Festival Hub
 11am **Bushwalk with Dr Ihirangi Heke**, Dunedin Botanic Gardens - Lovelock Avenue
 11am **Ruruku Exhibition Guided Tours**, Hocken Collections
 11.30am **Sip & Science - Emerson's Brewery Tour**, Emerson's Brewery
 12pm **The Wizard's Apprentice: A Magical Science Mystery**, Festival Hub
 1pm **Youth computer hardware workshop**, Festival Hub
 1pm **The Wizard's Apprentice: A Magical Science Mystery**, Festival Hub
 1pm **Sip & Science - Emerson's Brewery Tour**, Emerson's Brewery
 2pm **Fight Like a Physicist**, Dunningham Suite, Dunedin Public Library
 2pm **The Wizard's Apprentice: A Magical Science Mystery**, Festival Hub
 2pm **Fossils Talk: Historical Plastic**, Festival Hub Seminar Space
 2pm **Gin-Making Workshop**, No. 8 Distillery
 3pm **Atomically Correct**, Te Whare o Rukutia
 4pm **Sip & Science - Emerson's Brewery Tour**, Emerson's Brewery
 5pm **Death in the Distillery: A Forensic Mystery**, No. 8 Distillery
 5.30pm **Sip & Science - Emerson's Brewery Tour**, Emerson's Brewery
 7pm **Sip & Science - Emerson's Brewery Tour**, Emerson's Brewery
 8pm **Death in the Distillery: A Forensic Mystery**, No. 8 Distillery

SUNDAY 6 JULY

10am **Imagination Playground**, Festival Hub
 10am **Sustainable keyboard artplay**, Festival Hub
 10am **30 Years of Pakake: All Our Stories**, Meridian Mall
 10am **Science Alive: Hands on Science!**, Festival Hub
 10am **Backyard Biodiversity**, Golden Centre Mall
 10am **Science Alive Shop**, Festival Hub
 10am **Quantum Quest**, Festival Hub
 10am **Dr Rock**, Festival Hub
 10am **The Wizard's Apprentice: A Magical Science Mystery**, Festival Hub
 10am **Exploring Dunedin's Extinct Volcano**, Port To Port Cruises
 10am **Robotics. Automation. Innovation**, Festival Hub
 10am **Alternative Operating System Exhibition**, Festival Hub
 10am **Hunt for the aurora/Tahu-nui-a-rangi!**, Dunedin Botanic Garden
 10am **Dunedin Repair Cafe**, Festival Hub
 10.30am **Women in Science Brunch**, Deja Vu Eats
 10.30am **Meet Maria Skłodowska-Curie!**, Festival Hub Seminar Space
 11am **Sustainable keyboard artplay**, Festival Hub
 11am **Jean Stevens and 'Blooming Impossible'**, Festival Hub Seminar Space
 11am **Magnetic Leaves Bioblitz**, Woodhaugh Gardens

SUNDAY 6 JULY CONT.

11am **Renewable Energy Pop-up Science Station**, Festival Hub
 11am **Into the Green: Nature for Wellbeing**, Woodhaugh Gardens
 11am **The Wizard's Apprentice: A Magical Science Mystery**, Festival Hub
 11.30am **Exploring Dunedin's Extinct Volcano**, Port To Port Cruises
 12pm **The Wizard's Apprentice: A Magical Science Mystery**, Festival Hub
 1pm **The Wizard's Apprentice: A Magical Science Mystery**, Festival Hub
 2pm **The Wizard's Apprentice: A Magical Science Mystery**, Festival Hub
 2pm **Fossils Talk: Historical Plastic**, Festival Hub Seminar Space
 3pm **Picturing Unseen Realms**, Teachers College Auditorium (UoO)
 3pm **Science at the OPERA**, The OPERA
 4pm **Sip & Science - Emerson's Brewery Tour**, Emerson's Brewery
 5pm **Death in the Distillery: A Forensic Mystery**, No. 8 Distillery
 5.30pm **Sip & Science - Emerson's Brewery Tour**, Emerson's Brewery
 7pm **Sip & Science - Emerson's Brewery Tour**, Emerson's Brewery
 8pm **Death in the Distillery: A Forensic Mystery**, No. 8 Distillery

A BIG THANKS TO OUR EVENT PARTNERS



YOUR FUTURE IN **SCIENCE** STARTS AT OTAGO.

UNDERGRADUATE
AND POSTGRADUATE
DEGREES AVAILABLE.



University
of Otago

ŌTĀKOU WHAKAIHU WAKA

FIND OUT MORE:
[OTAGO.AC.NZ/SCIENCES](https://otago.ac.nz/sciences)